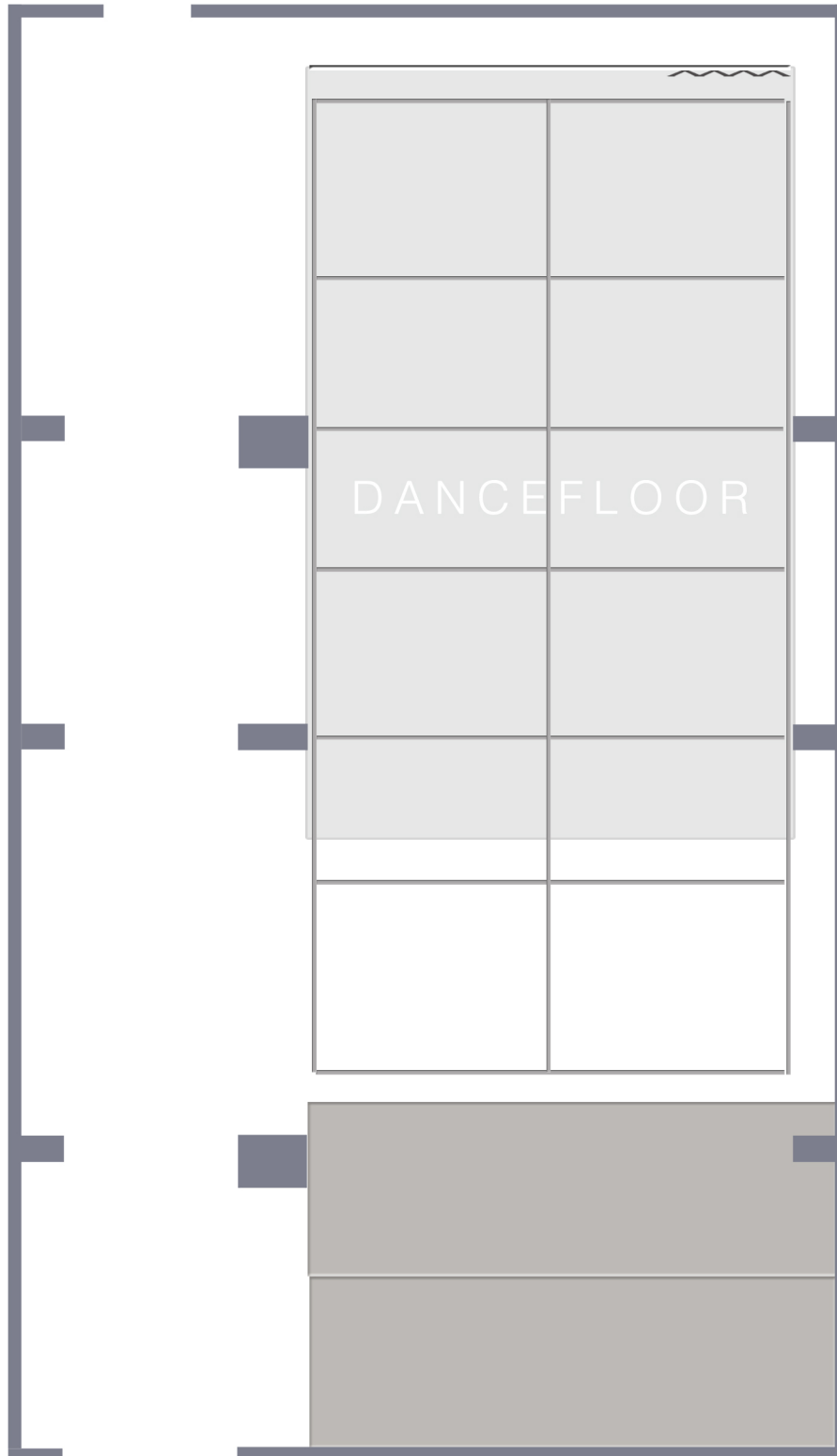


Ceiling height: 2950/2450 in the backstage area  
 3 partitions are fixed  
 Darkening: entire room - black molton  
 Screen: 5600x2900, behind black Molton on rail



## LIGHTS

<b>Lighting Control Desk</b>	<a href="#">Zero 88 FLX S48</a> 1 Universe (512 DMX Adress)	1
	96 Channels / Devices	
	96 Subgroups / Scenes / Playbacks programmable, Cue List programmable	
	Go Button, Chaser, Effects, Fade time, Delay time	
	Software ZerOS (Win, Mac), Remote Control via iPad / iPhone	
<b>Dimmer</b>	Dimmer circuits a 1KW	48
<b>Lights</b>		
Fresnel 1000W	with Barndoor, 12-53°	4
Fresnel 650W	with Barndoor, 12-53°	5
Fresnel 500W	with Barndoor, 12-53°	13
Fresnel 300W	Mini/Compact with Barndoor	12
Par 1000W	Par 64 long / CP62 medium flood	8
Par 300W	Par 56 short / medium flood	5
LED's (fix)	RGB-White/Amber - Cameo Pro Can 7 (7x10W) (Front, Sides, Back, Single addressed)	12
<b>Stroboscope</b>	DMX, 2 Channels	1
<b>Fog Machine</b>	DMX, 1 Channel	1
<b>Stands</b>	Floor Stands	6
	High Stands	6

# SOUND

<b>Sound Mixer</b>	<a href="#">Yamaha MG16XU</a> , 10 Mic Inputs, 4 Stereo Line In, 2 Groups, 3 Aux (2 Pre/Post), 1 SPX Effect processor	1
<b>PA</b>	E-Voice 100 ZXA1 active Speaker 200W	2
	+ EV ELX 118P active Subwoofer 700W	2
<b>Stage Monitors</b>	DB Flexys FM10 160W, active	2
<b>EQ</b>	DBX 231s, graphic Equalizer, 2 x 31 Band Constant Q filters	1
<b>Compressor</b>	DBX 266 XS, Stereo Compressor/Gate	1
<b>Multicore / Stagebox (fix)</b>	24/8 Channel	1
<b>DI Box</b>	1 Channel	4
	2 Channels	2
<b>Microphones</b>		
Vocals	Shure 58 Beta A, dynamic, supercardioid	3
Vocals wireless	Shure BLX288 / Beta 58, dynamic, supercardioid	3
Sax, Snare, Guitar Amp	Shure SM 57, dynamic, cardioid	3
Acoustic guitar	AKG C 1000s MKIV, Condenser	2
Gooseneck	AKG CGN 99 HL, hypercardioid, Condenser, Speech, conference	4
Condenser Boundary Layer	Sennheiser E 912 S BK, half cardioid, Speech, conference	2
<b>Stands</b>	Tripod with Boom Arm	4
	Round base	3
<b>CD/USB Player</b>	Reloop RMP1700RX - Audio-CD, USB (WAV, mp3) Autostop, Loop Function, Pitch control, Recording	1

# VIDEO

<b>Video - Projector</b>	Optoma EH461 - Full HD, 1080p, 5000 Ansilumen, HDMI	1
<b>Projector Shutter</b>	Blacky 3.0 DMX, 1 Channel	1
<b>Screens</b>		
fix	560 cm x 290 cm (WxH) nettle white stretched on stage back wall,	1
Motor roll screen	232 x 131 cm (WxH,16:9) - fix, center - front half of the stage	1